













© 2013 Google
© 2013 Google

Google earth

50°54'01.851"N 4°20'36.975"E





SVYTURYS
1784

SVYTURYS
1784

SVYTURYS
1784

SVYTURYS
1784

SVYTURYS
1784

SVYTURYS
1784





Handwritten graffiti at the top of the alcove, partially obscured by the top edge of the frame.

15 APR 11

Handwritten graffiti at the bottom of the alcove, partially obscured by the bottom edge of the frame.





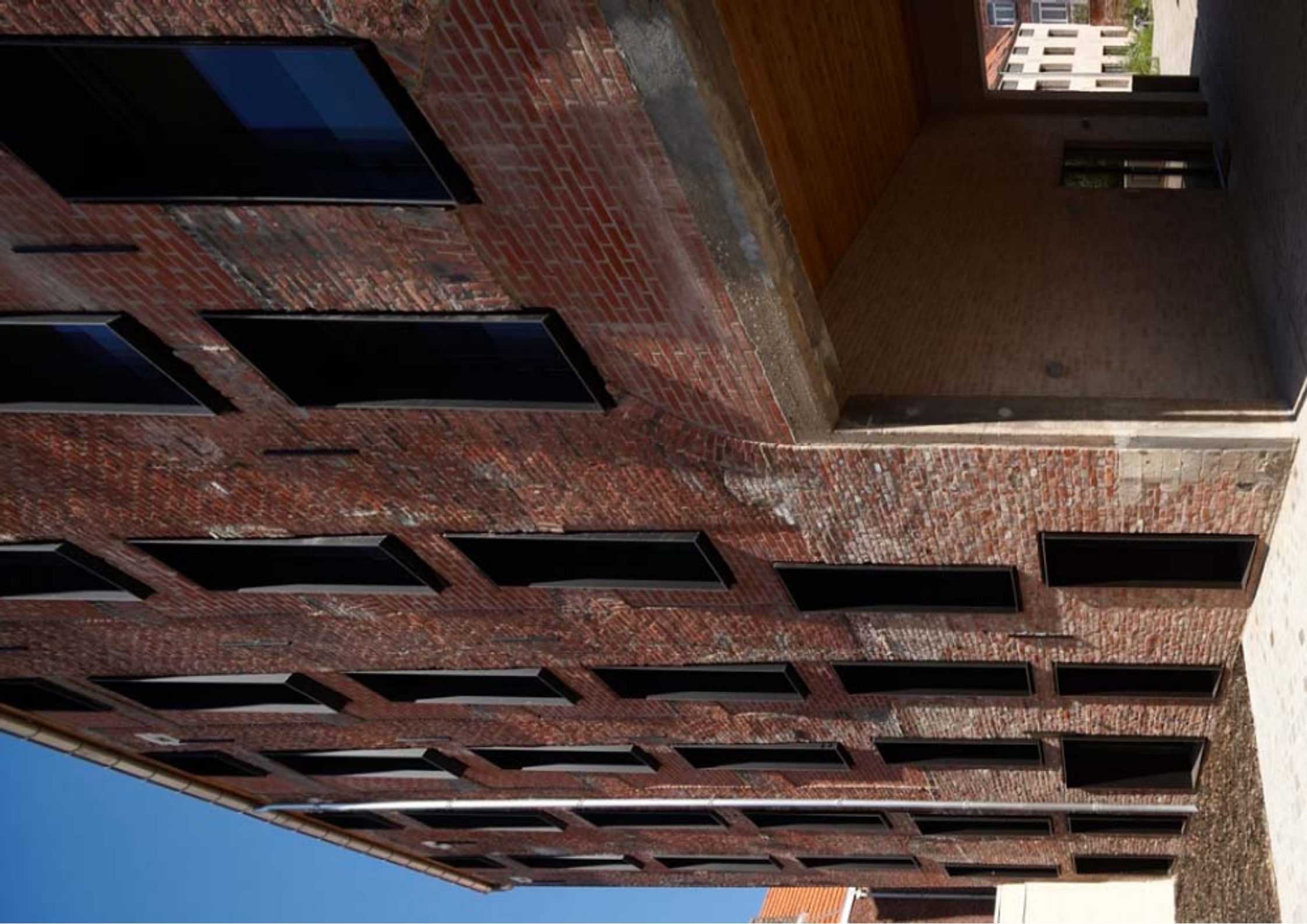
























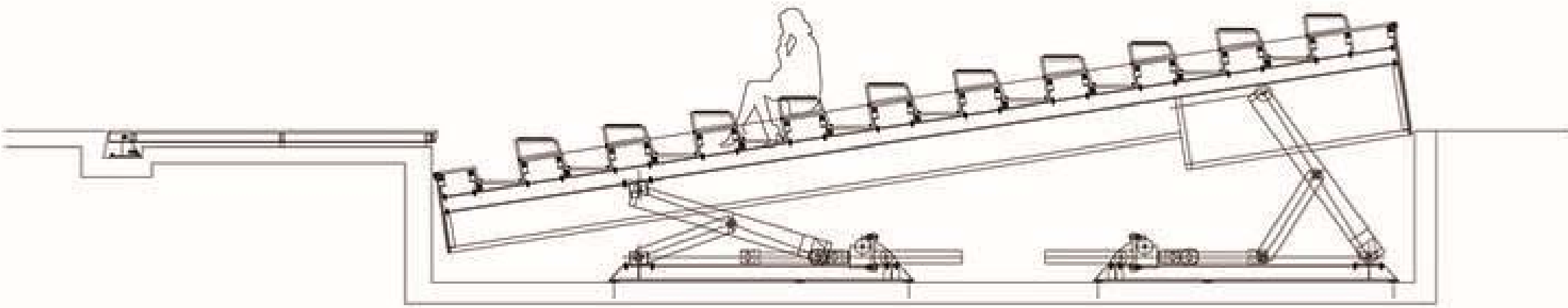
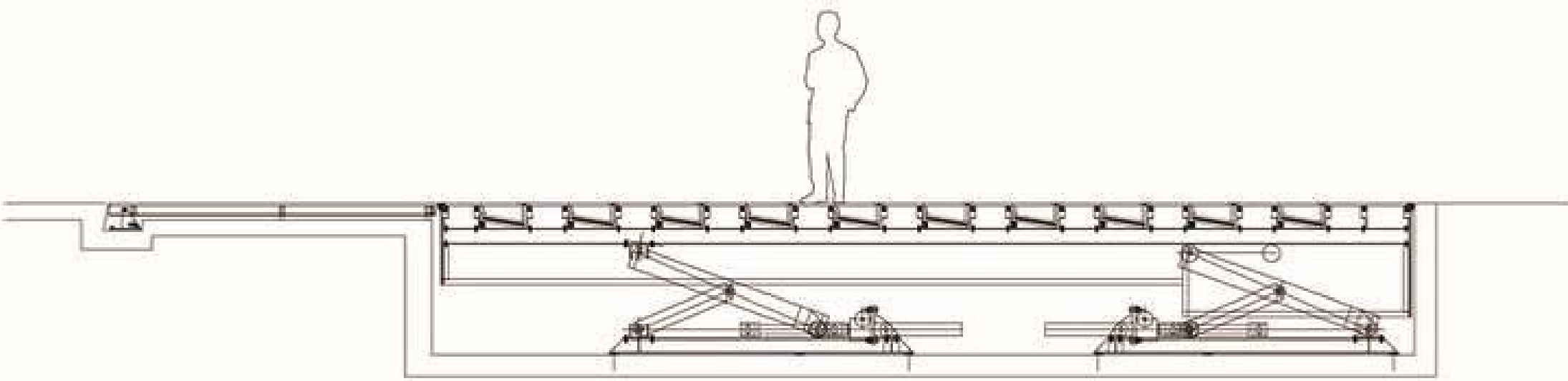


















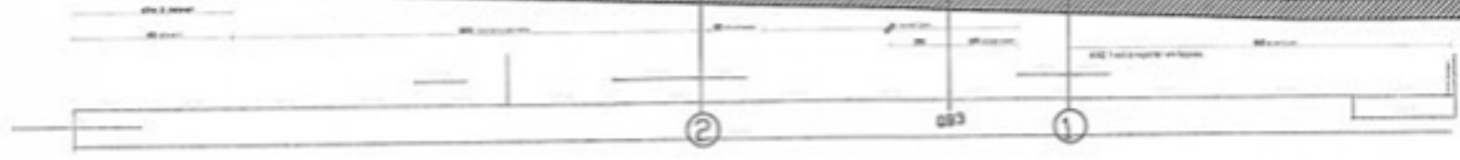
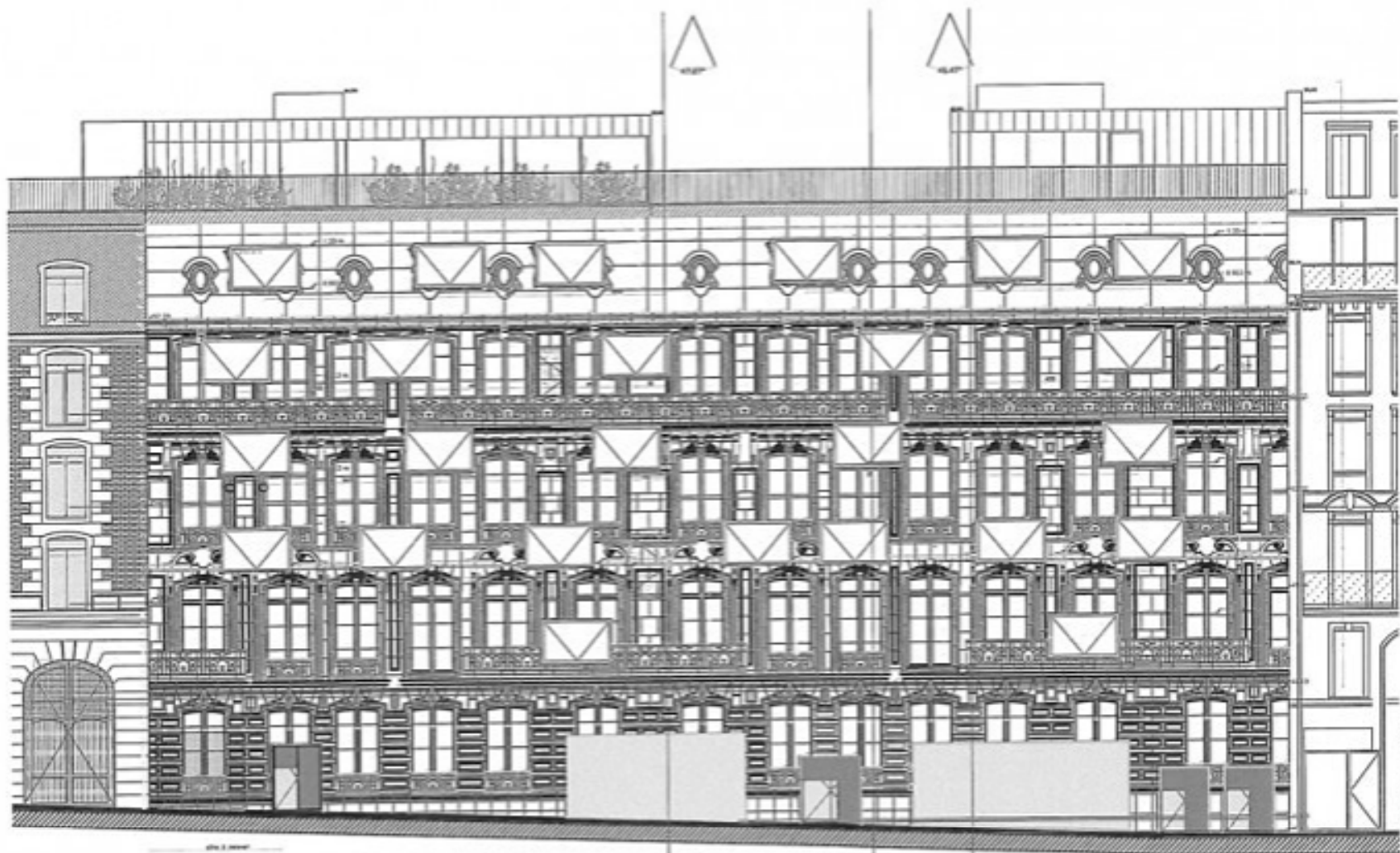












Edouard François' architecture
Edouard François' photograph













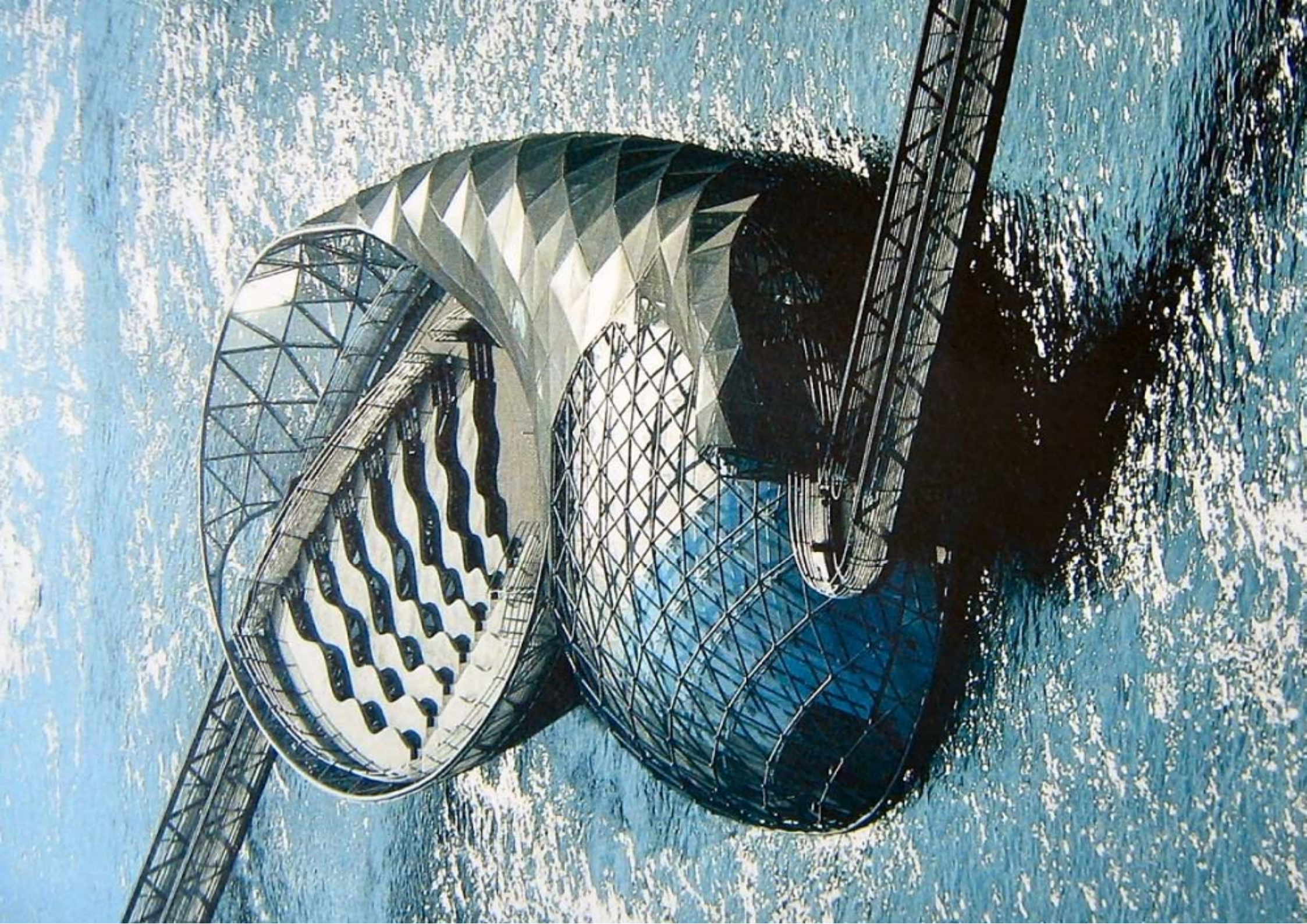






















OTH
BEER SEHEN

Preismühle



