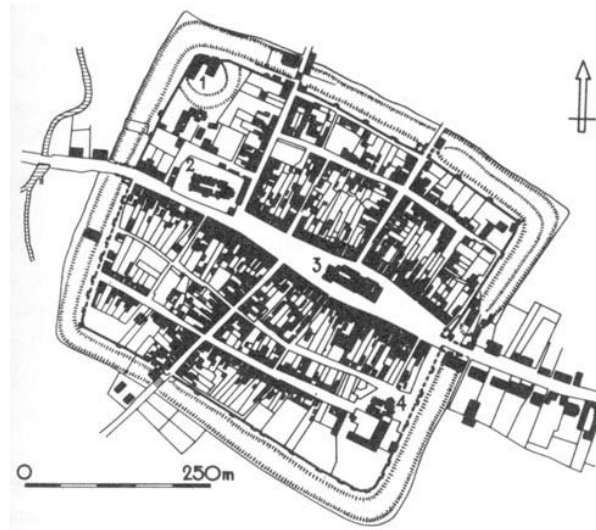
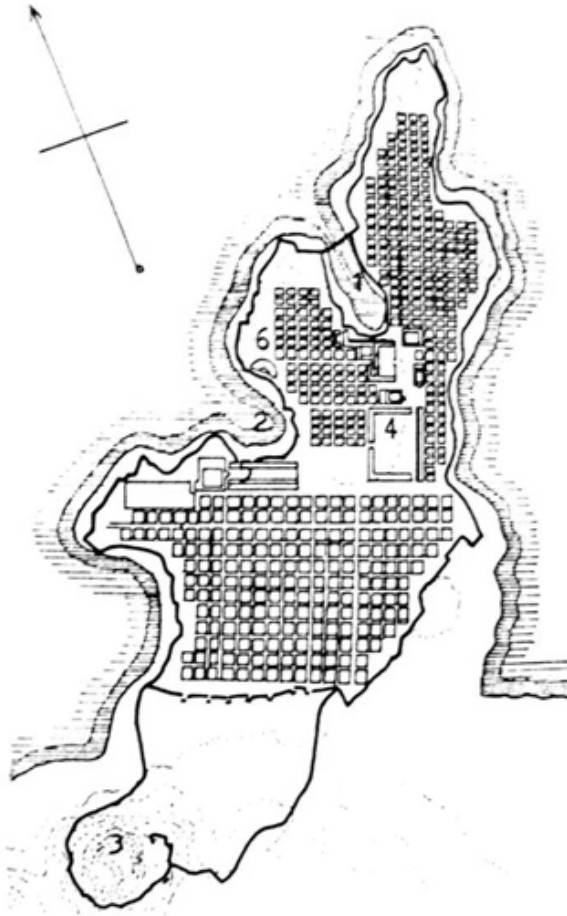


THE HISTORIC URBAN LANDSCAPE AS A RECORD OF POLITICAL HISTORY

EWA NEKANDA TREPKA

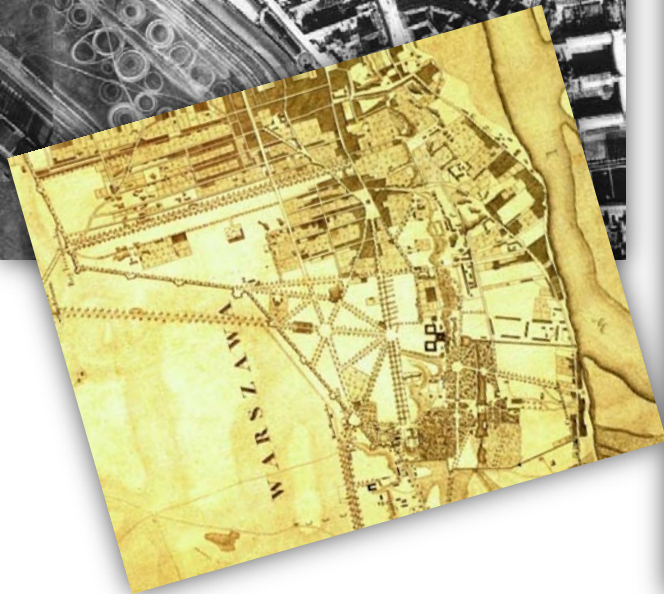
Acient Greece, Milet; Medieval town, Środa Śląska;
Renaissance city, Zamość



Cracow and Warsaw in the 19th century



Warsaw, MDM (Marszałkowska Housing District) 1936-1945-2013

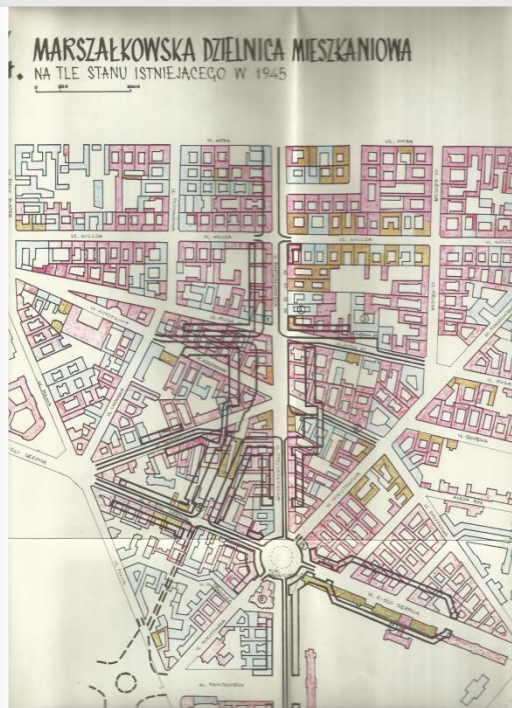


Warsaw, MDM

Z. Stępiński's drawings



Podcienia na placu Konstytucji



Fragment architektury placu Konstytucji

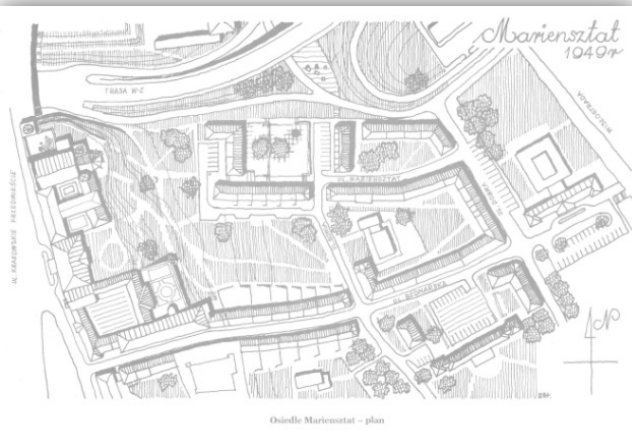
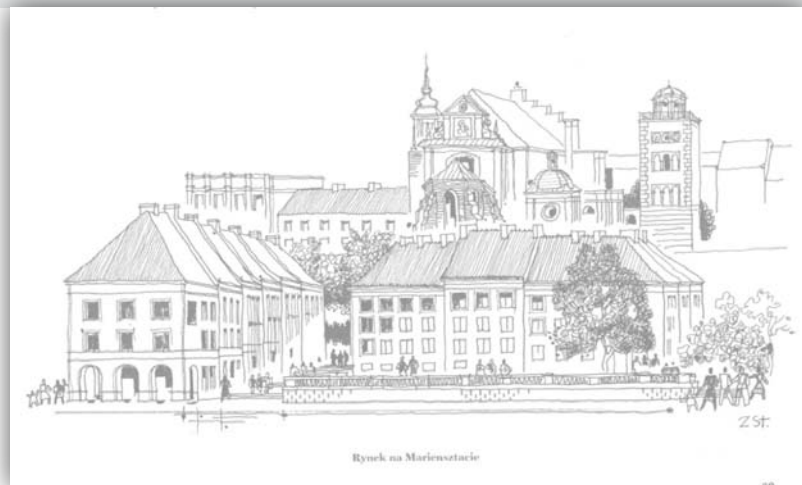
Warsaw, the Old Town

1936-1945-2013



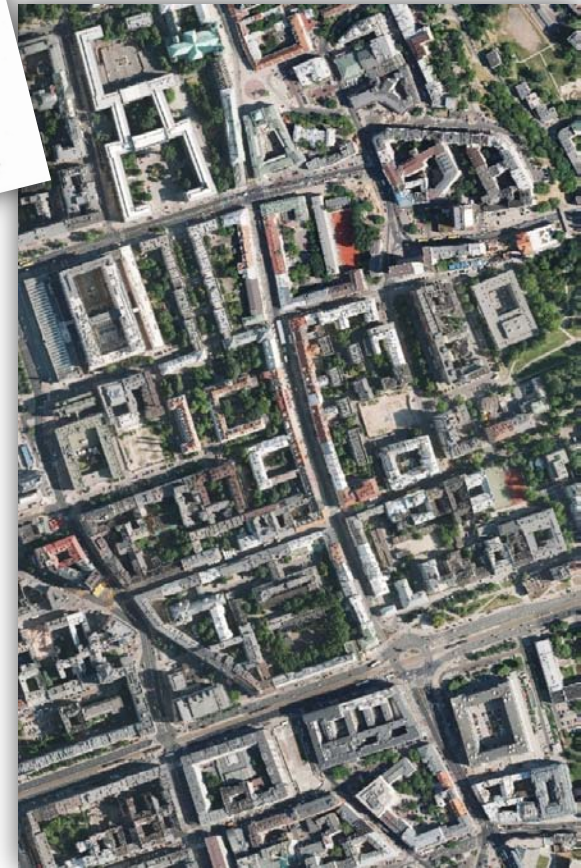
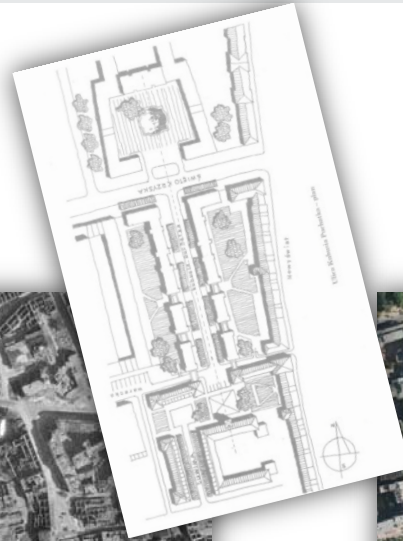
Warsaw, Mariensztat district

1936-1945-2013



Warsaw, Nowy Świat Street

1936-1945-2013



Warsaw, Nowy Świat Street

Z. Stępiński's drawings



Odbudowany Nowy Świat – odcinek północny



Wlot ulicy Wareckiej do Nowego Światu – po odbudowie

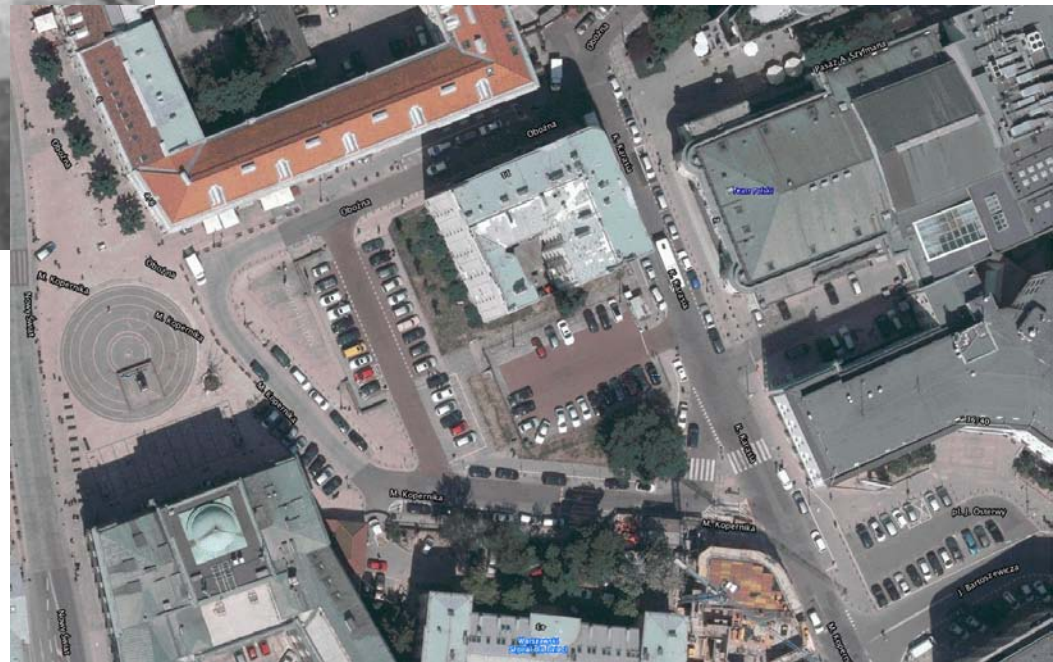
Warsaw, previous Saxson Place

1945-2013



Warsaw, Krakowskie Przedmieście Street

1945-2013



Warsaw, Teatralny Place

1945-2013



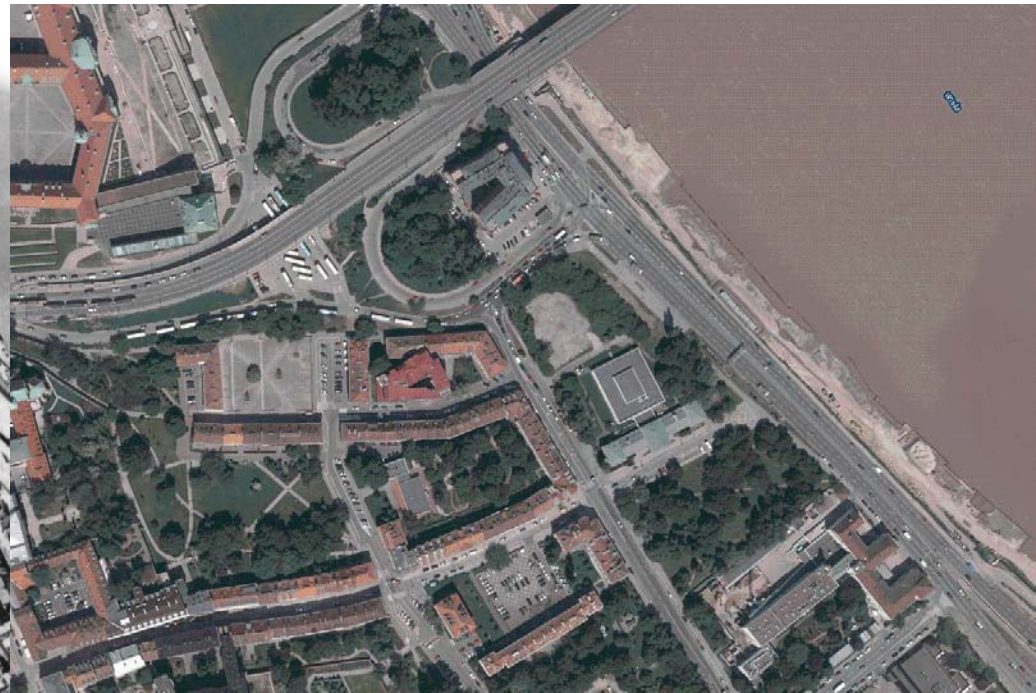
Warsaw, Bugaj Street

1936-1945-2013



Warsaw, Mariensztat District

1936-1945-2013



Warsaw's panorama

Z. Stępiński's drawing, 1955



Widok z Wisły 1955



RYNEK STAREGO MIASTA 28-42, 00-272 WARSAW

TEL.+48 22 635 16 25, FAX 831 94 91

WWW.MUZEUMWARSZAWY.PL